

September 6, 1994
CL:tt

Introduced by: BRIAN DERDOWSKI

Proposed No: 95 - 007

ORDINANCE NO. **11703**

AN ORDINANCE relating to drug-free zones;
approving maps of the location and boundaries of
park property in King County within which unlawful
transactions in controlled substances are subject
to enhanced penalties pursuant to RCW 69.50.435
and adding a new section to K.C.C. 12.82

PREAMBLE:

K.C.C. 12.82 establishes a procedure for the production or reproduction of maps depicting the location and boundaries of parks, schools and areas within one thousand feet of schools, within which unlawful transactions in controlled substances are subject to enhanced penalties as imposed pursuant to RCW 69.50.435. The King County Parks Division has prepared maps depicting such park boundaries. It is in the public interest to provide notice of the location of such areas and to expedite prosecution, conviction, and enhanced penalties for cases of unlawful transactions in controlled substances in such locations.

BE IT ORDAINED BY THE COUNCIL OF KING COUNTY:

SECTION 1: The boundaries of drug-free zones surrounding the following parks as listed in Exhibits "A: through "J" located within King County are hereby adopted:

- A. Lake Wilderness
- B. O.O. Denny
- C. Juanita Beach
- D. Pine Lake
- E. Beaver Lake
- F. Fort Dent
- G. Tracy Owen Station
- H. Petrovitsky
- I. Richmond Highlands
- J. Si View

1 The copies of the county assessor's maps reproduced by the parks division
2 which depict the location and boundaries of the drug-free zones surrounding these
3 parks within King County, are on file with the parks division, and the department
4 of executive administration, records and elections division.

5 INTRODUCED AND READ for the first time this 17th day of
6 January, 1995.
7 PASSED this 13th day of March, 1995.

8 KING COUNTY COUNCIL
9 KING COUNTY, WASHINGTON

10 Kent Pullen
11 Chair

12 Passed by a vote of 13-0.

13 ATTEST:

14 Gerald A. Peterson
15 Clerk of the Council

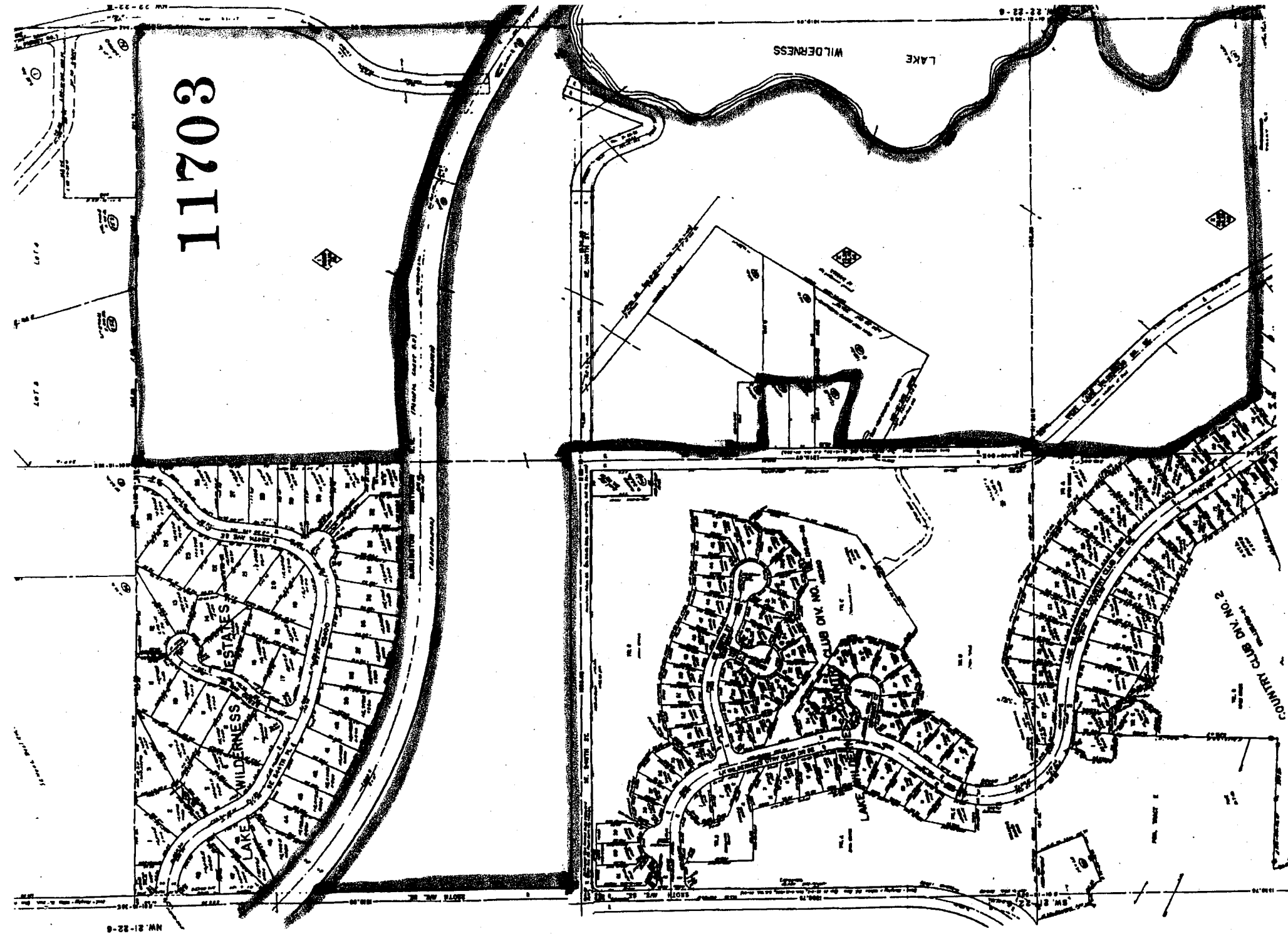
16 APPROVED this 21st day of March, 1995.

17 Bruce Loefer
18 King County Executive

19 Attachments:

20 A. Maps depicting exhibits "A" through "J"

1
2
3
4
5
6
7
8
9
10
11
12
13
14
15
16
17
18
19
20
21
22
23
24
25
26
27
28
29
30
31
32
33



LAKE WILDERNESS + LAKE WILDERNESS/POPLE VALLEY TRAIL SECT

NW 21-22-8

NW 21-22-8

30211

CITY OF SEATTLE VOL. 11-67

72 NO. AVE. NE (300 sq. ft.)

1 NE 120TH ST

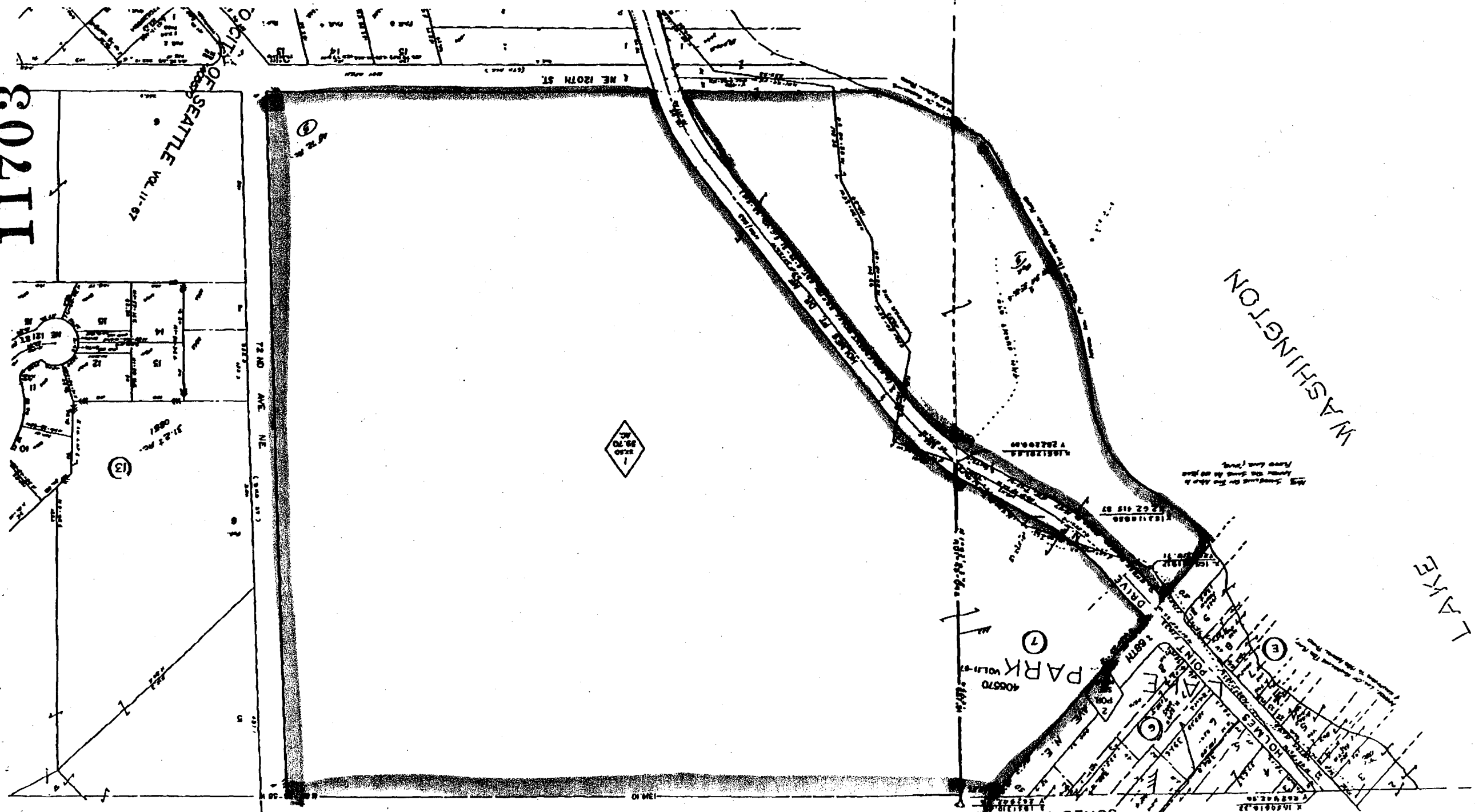
1
30.70 AC.

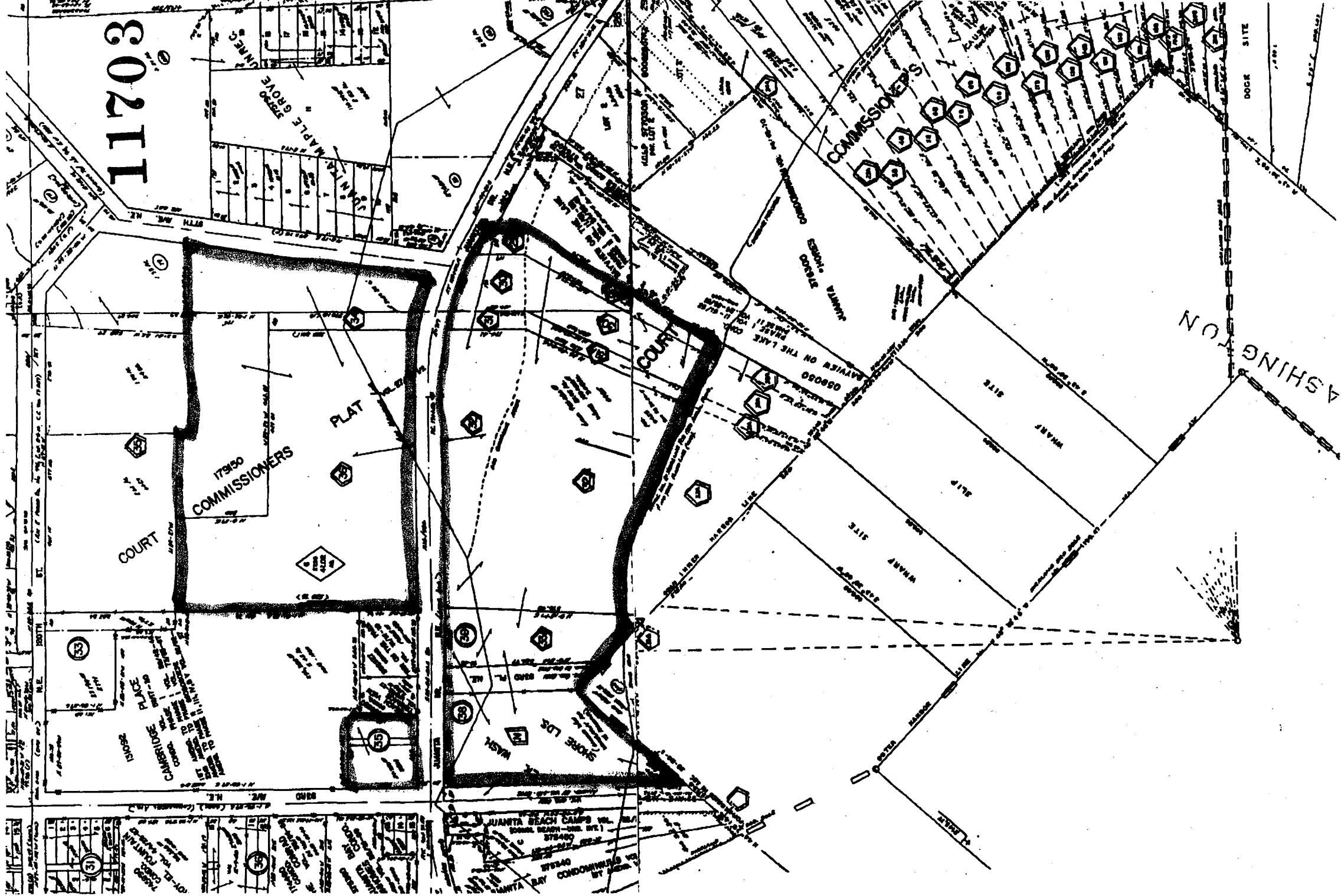
PARK (7)
406570 VOL. 11-67

WASHINGTON

LAKE

DEPT. OF THE 14TH STREET

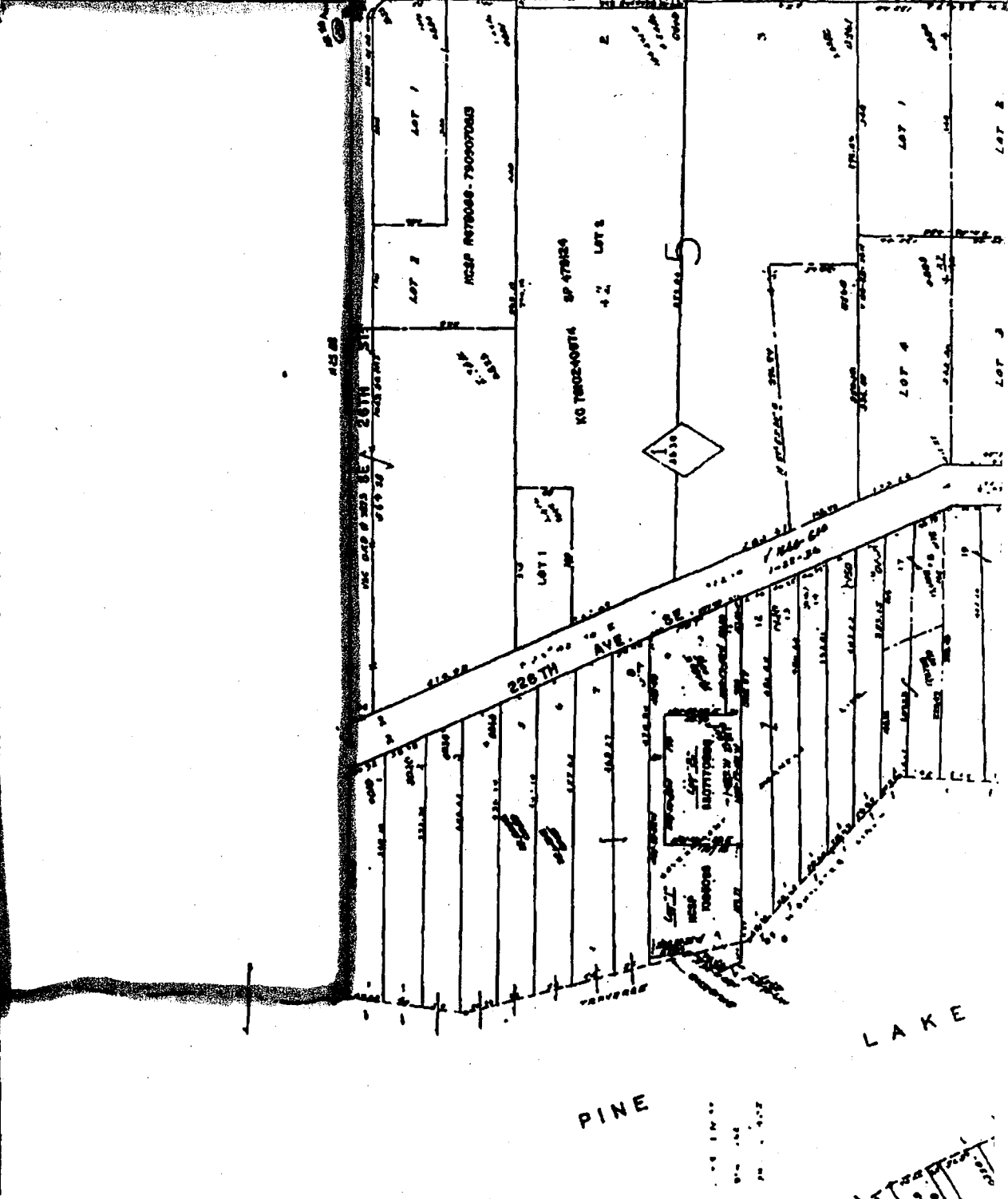
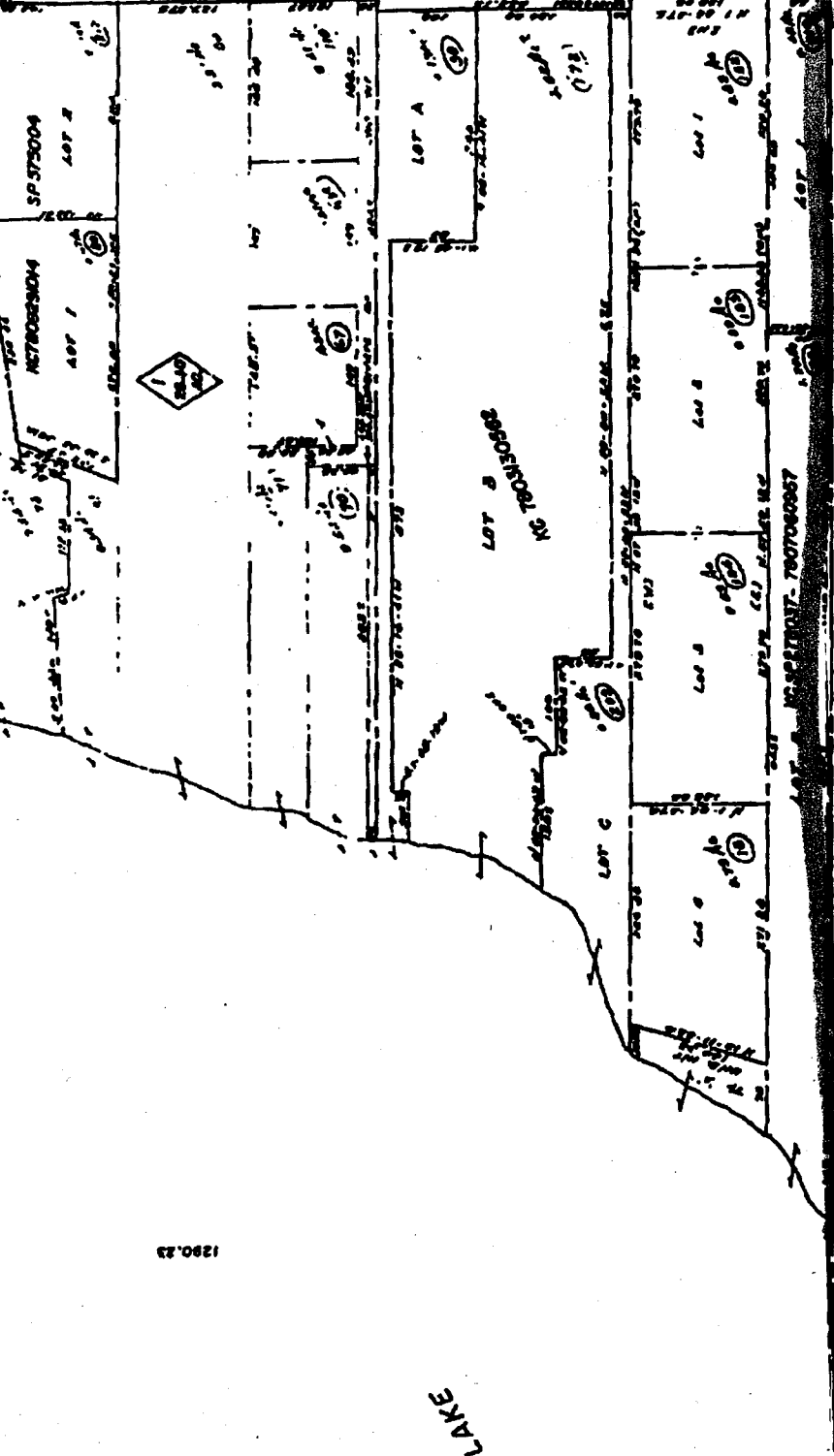
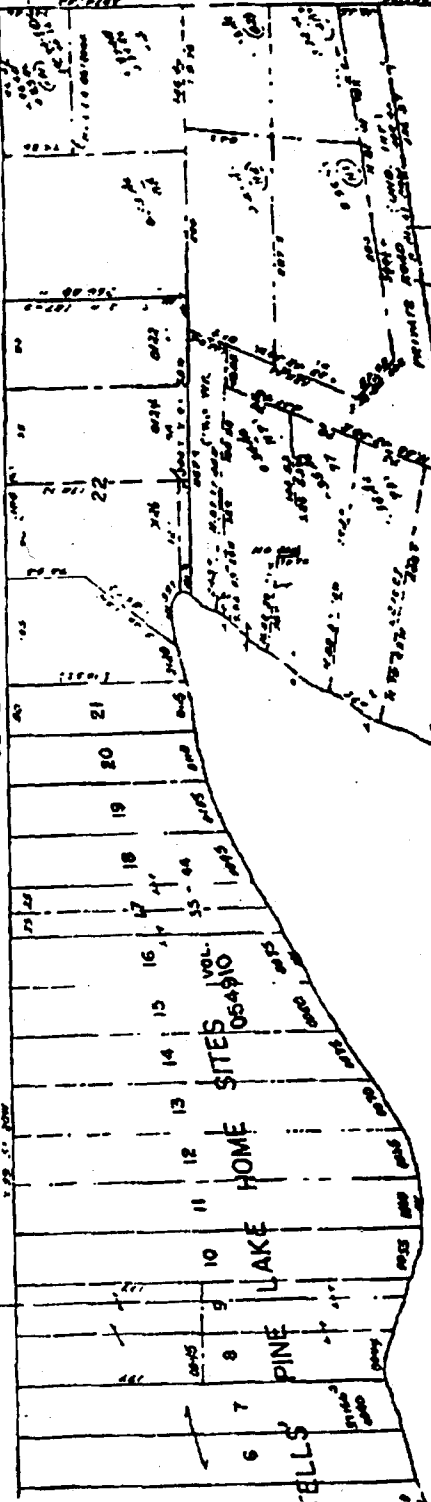




JUN

11603

SE 20TH ST.



1290.23

LAKE

PINE

LAKE

11703

NE. 10-24-6

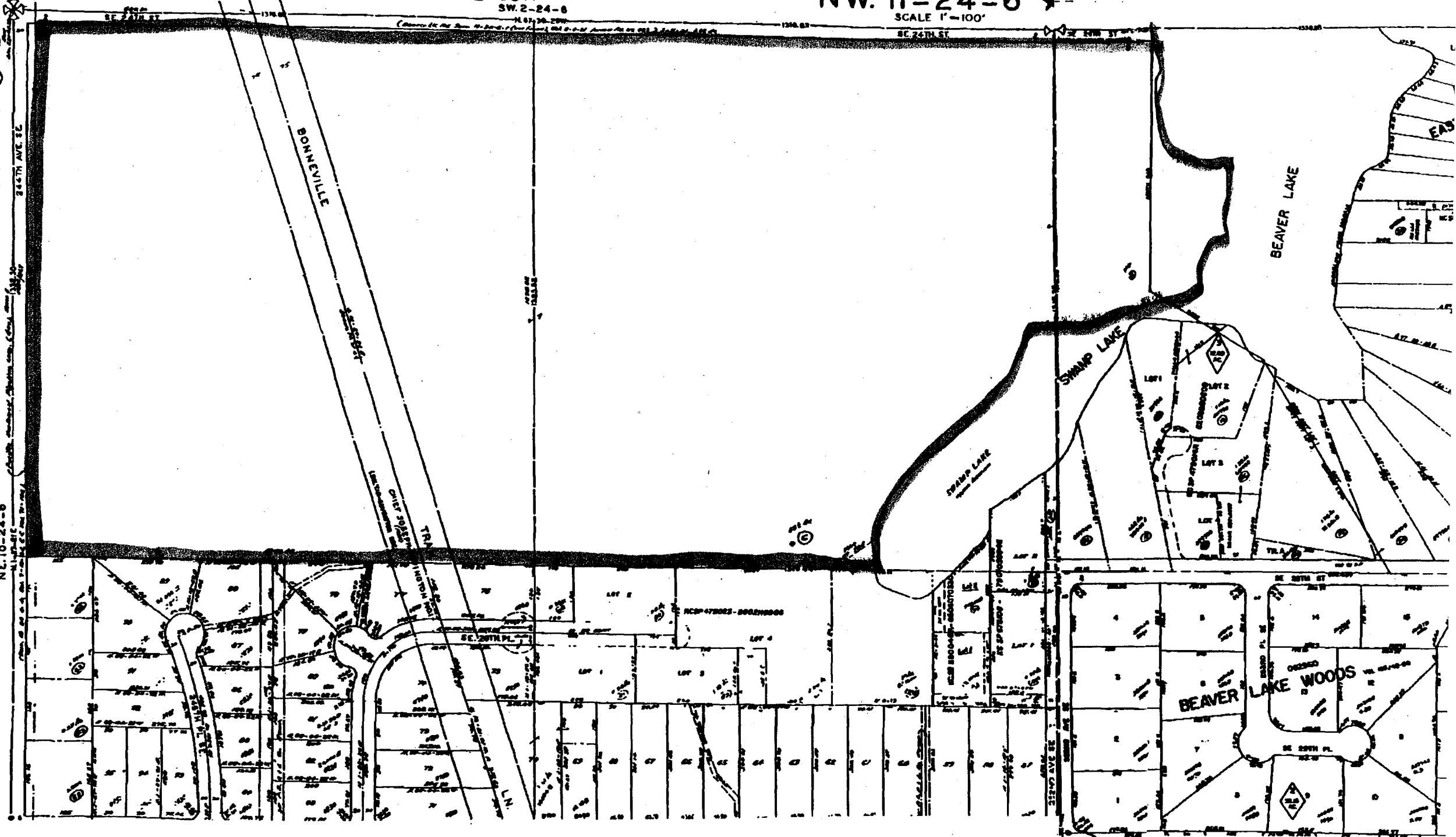
KING COUNTY ASSESSOR

SW. 2-24-6

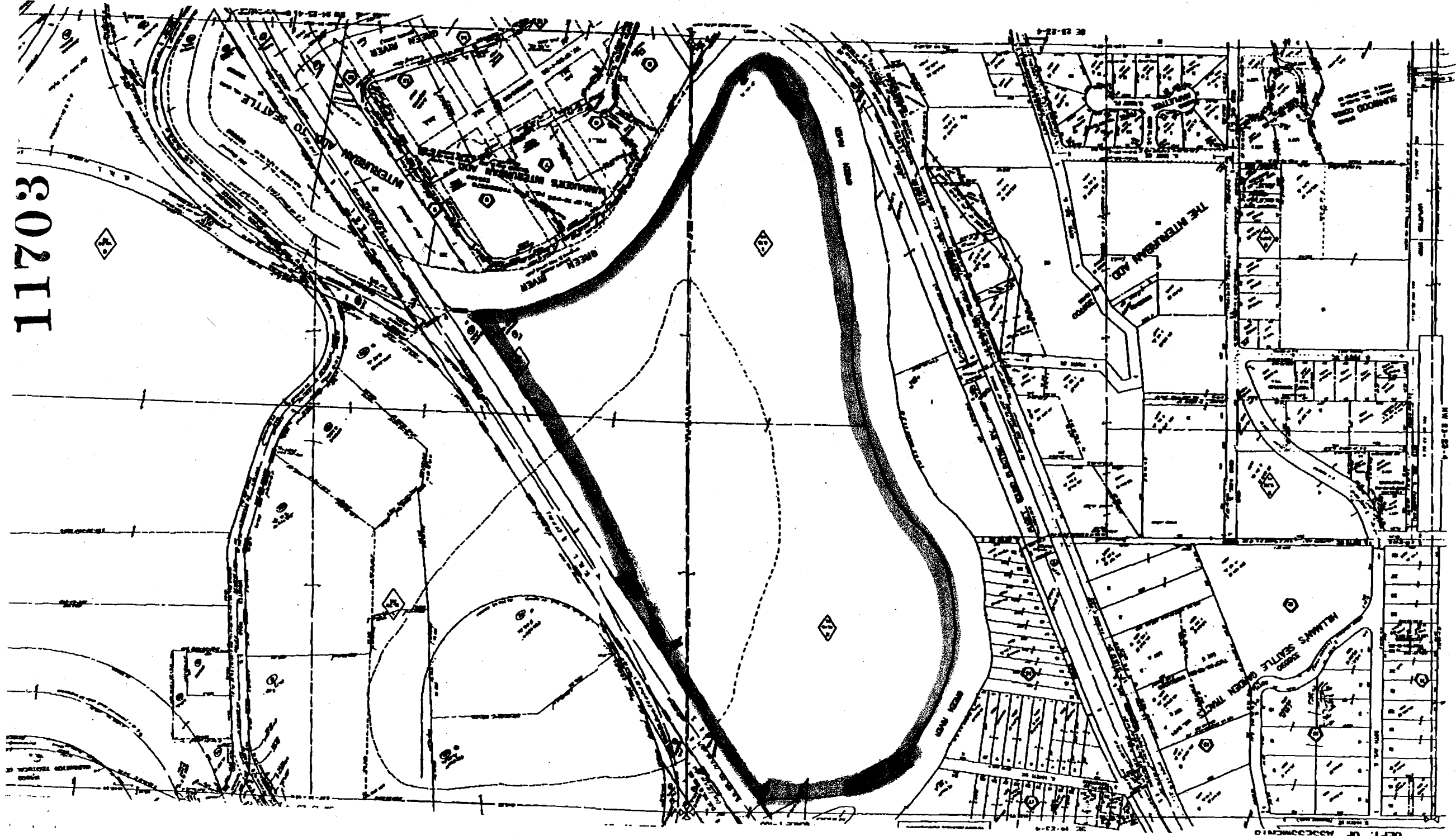
NW. 11-24-6

SCALE 1"=100'

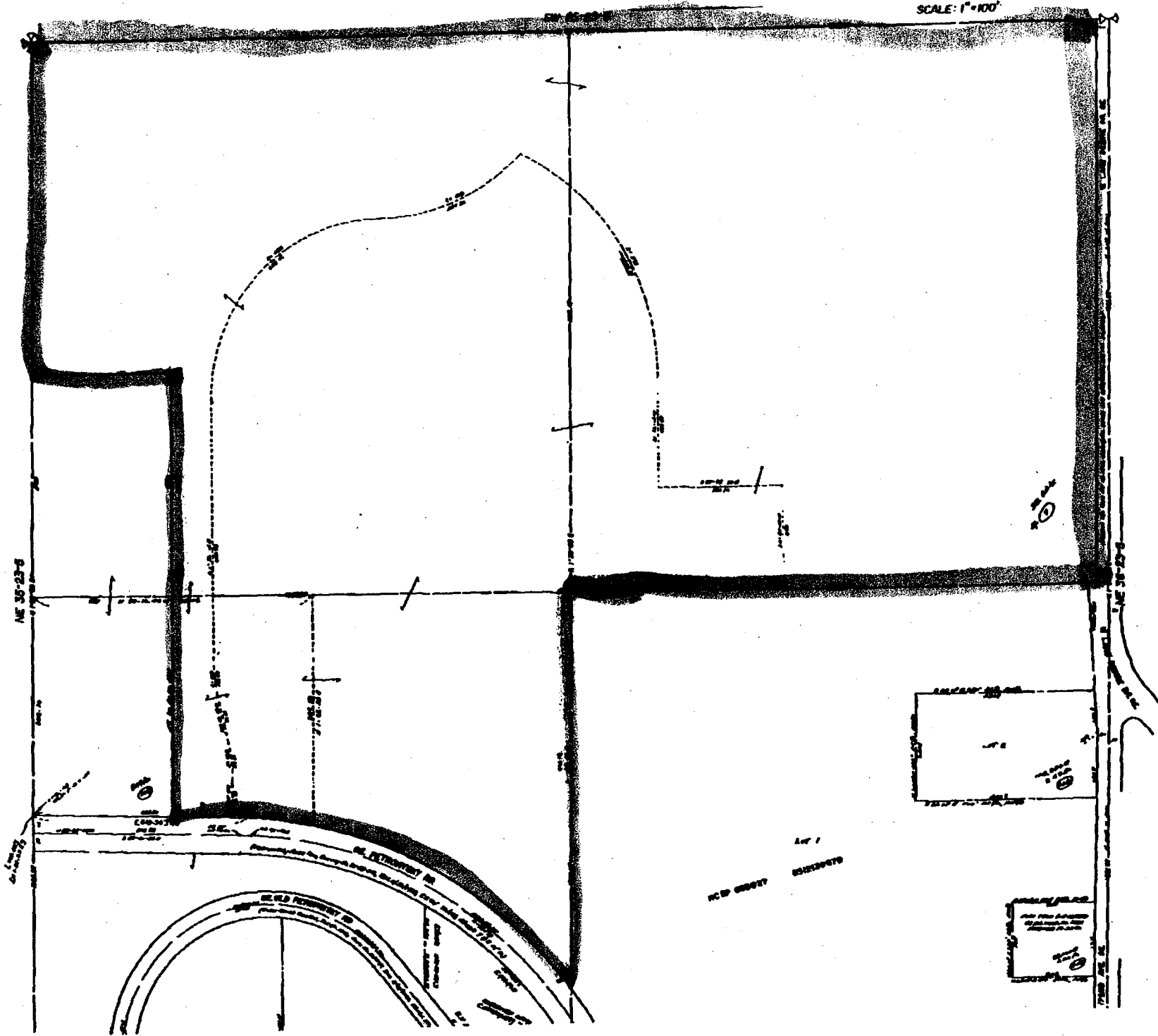
NO OTHER ACCURACY ASSURANCE



11703

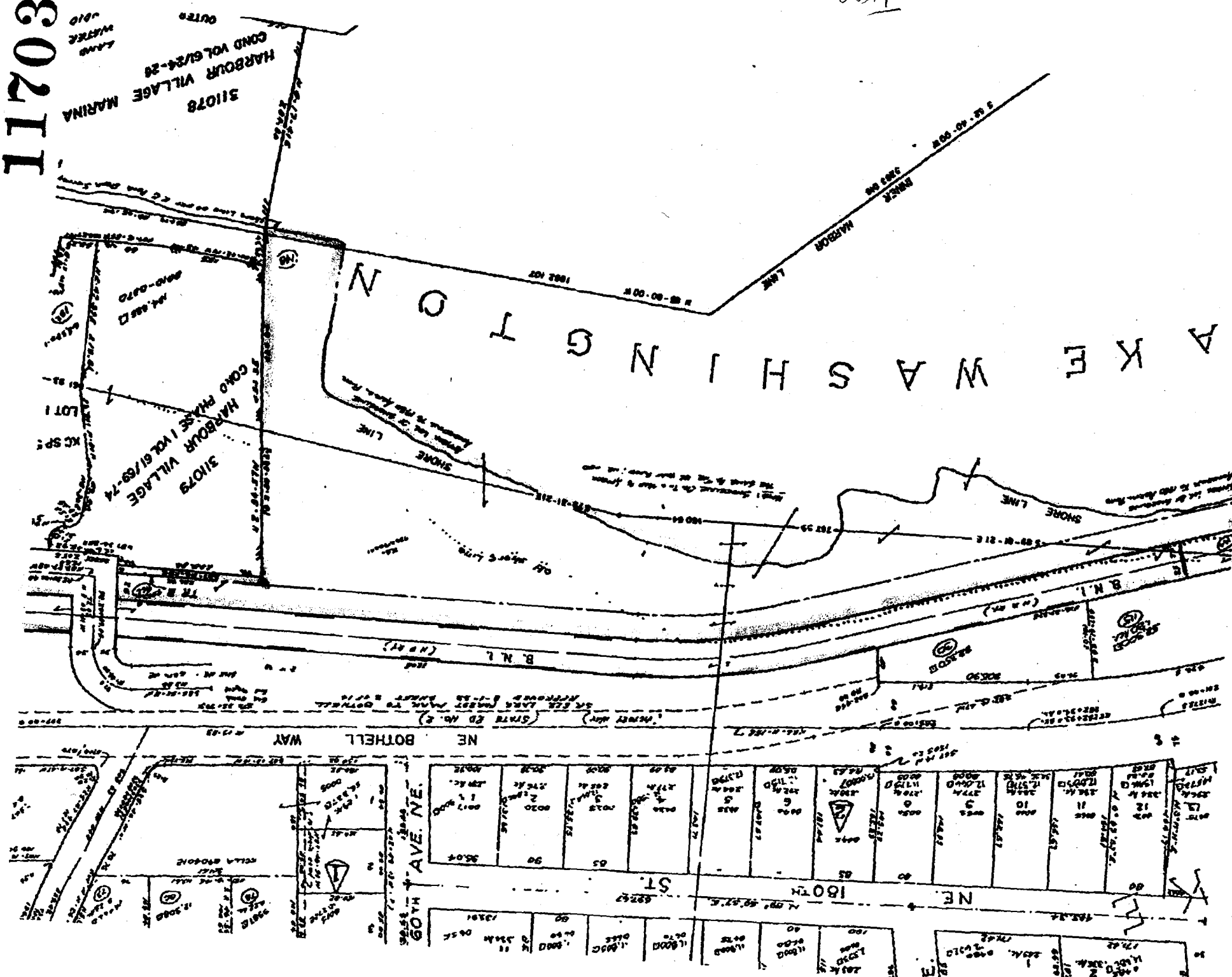


11703



PETROVITSKY

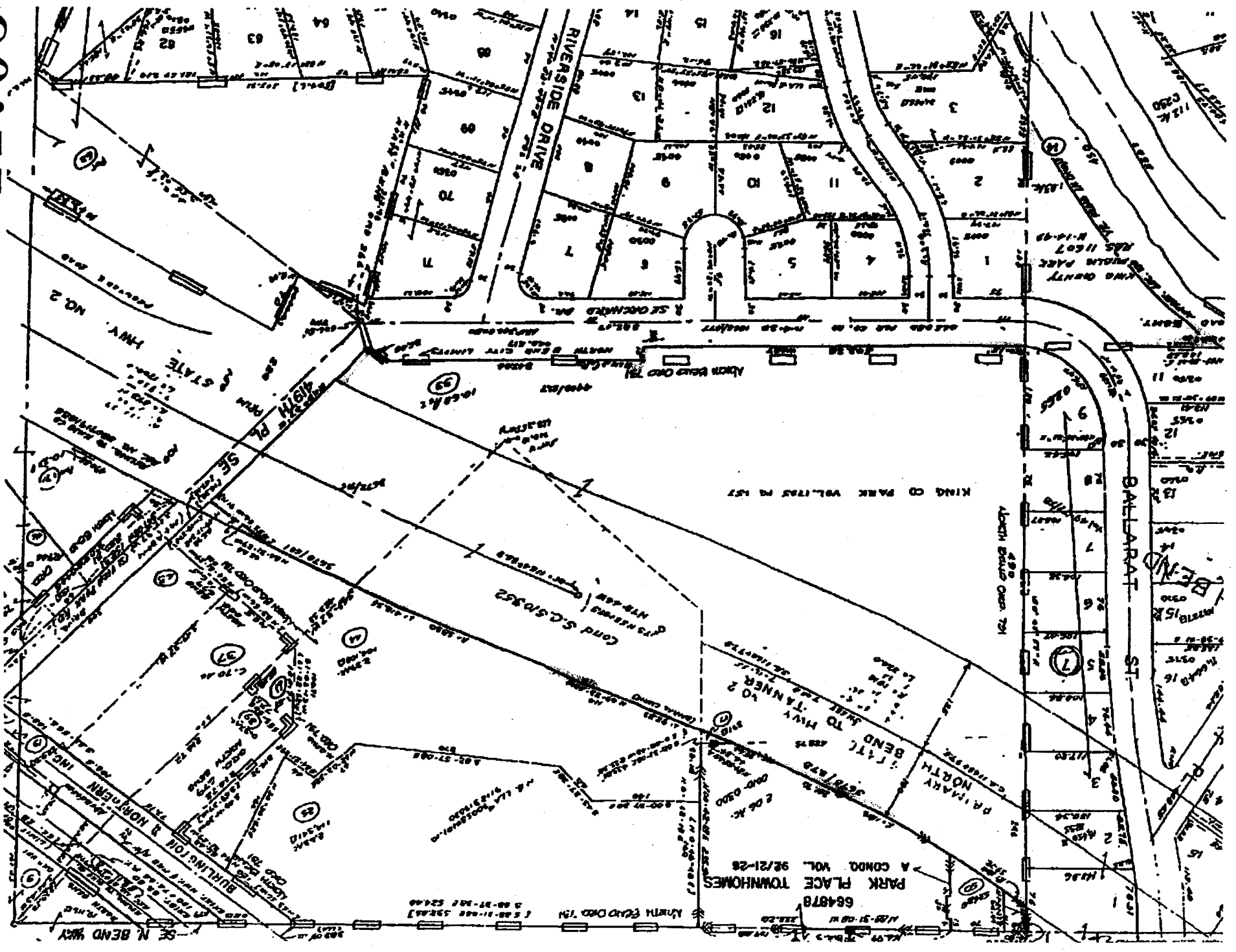
30211



Trans Union Station & Burke - 6-11-1933

SI VIEW PARK

30211



664878
 PARK PLACE TOWNHOMES
 A CONDO VOL. 92/21-28

664878
 PARK PLACE TOWNHOMES
 A CONDO VOL. 92/21-28

664878
 PARK PLACE TOWNHOMES
 A CONDO VOL. 92/21-28

KING OF PARK VOL. 175 P. 157

Cond. G.S. 51952

BALZARAT ST

RIVERSIDE DRIVE

SE STATE HWY. NO. 2

SE N BEND WAY

BUILDING FOR B. NORMANN INC.

SE 1/4

N 1/4

E 1/4

SE 1/4

N 1/4

E 1/4

SE 1/4

N 1/4

E 1/4

SE 1/4

N 1/4

E 1/4

SEC. 17, T. 140 N., R. 102 W.

NW 18-26-4

TRACED BY D.T. 11-88

30211



SE 7-26